



Designed for possibilities.
Made for people.

Altro Suprema





Altro Suprema

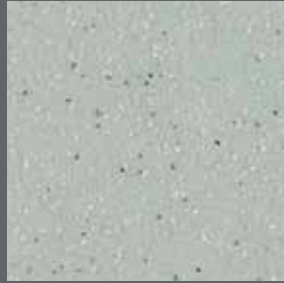
altro



Sugar | SU2042
WR284 / A1M01 / LRV 65



Snowflake | SUD2076
WR284 / A1M01 / LRV 71



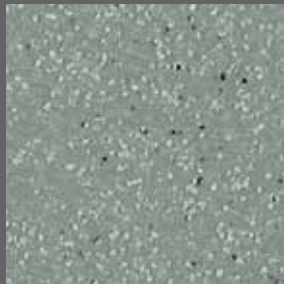
Dew | SU2036
WR191 / A1M191 / LRV 45



Montana | SUD2077
WR372 / A1M81 / LRV 27



Alaska | SUD2079
WR374 / A1M79 / LRV 49



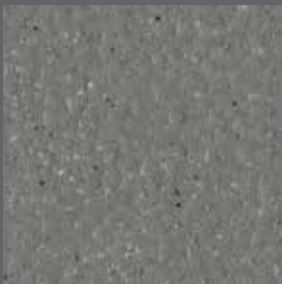
Wolf | SU2050
WR261 / A1M81 / LRV 29



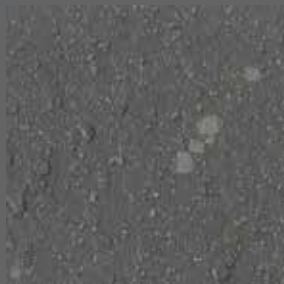
Shadow | SU2056
WR269 / A1M84 / LRV 24



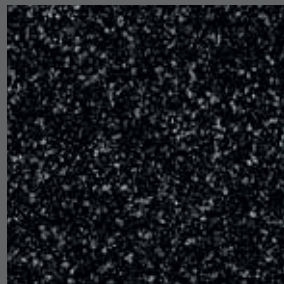
Platinum | SUI2064
WR201 / A1M84 / LRV 24



Chinchilla | SU2078
WR373 / A1M86 / LRV 19



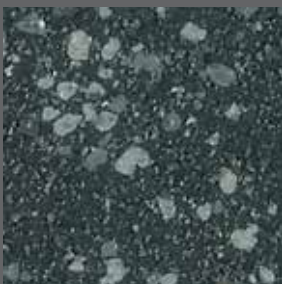
Wallaby | SUI2080
WR375 / A1M82 / LRV 14



Raven | SU2054
WR277 / A1M100 / LRV 7



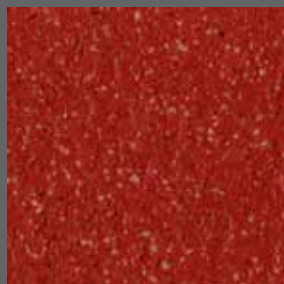
Flamingo | SU2063
WR276 / A1M276 / LRV 16



Fossil | SUI2067
WR232 / A1M82 / LRV 12



Flint | SU2034
WR82 / A1M82 / LRV 13



Lipstick | SU2085
WR380 / A1M238 / LRV 9



Berry | SU2059
WR275 / A1M44 / LRV 8



Calico | SUI2069
WR283 / A1M20 / LRV 52



Oatmeal | SU2046
WR265 / A1M265 / LRV 38



Parchment | SU2041
WR267 / A1M20 / LRV 45



Earth | SUI2066
WR282 / A1M239 / LRV 23



Owl | SUI2068
WR20 / A1M20 / LRV 40



Prairie | SU2044
WR279 / A1M20 / LRV 31



Taupe | SU2040
WR282 / A1M239 / LRV 23



Lava | SUI2070
WR260 / A1M260 / LRV 8



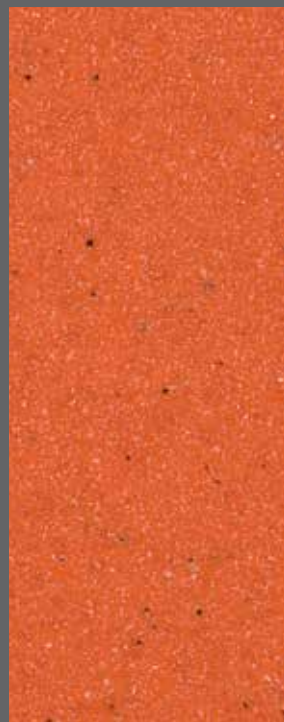
Platypus | SU2075
WR371 / A1M371 / LRV 13



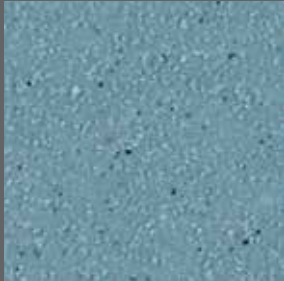
Loam | SU2047
WR260 / A1M260 / LRV 8



Tuscany | SU2084
WR379 / A1M42 / LRV 13



Tangerine | SU2052
WR273 / A1M273 / LRV 20



Bubble | SU2039
WR285 / A1M203 / LRV 34



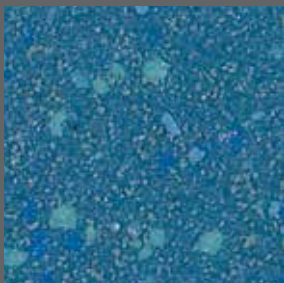
Malibu | SU2062
WR272 / A1M272 / LRV 26



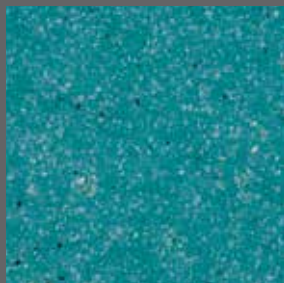
Bluebird | SU2037
WR231 / A1M73 / LRV 10



Caspian | SU2038
WR194 / A1M71 / LRV 18



Bluewater | SU12073
WR194 / A1M71 / LRV 17



Aegean | SU2057
WR270 / A1M56 / LRV 23



Bee | SU2083
WR378 / A1M378 / LRV 40



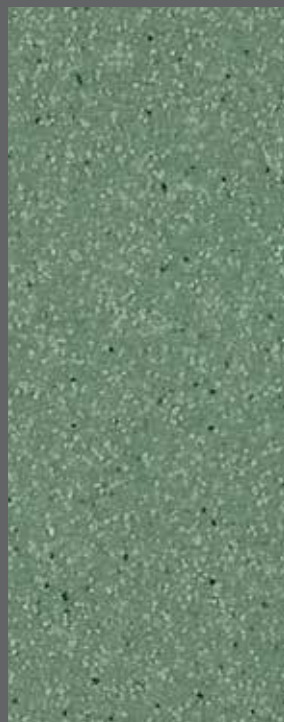
Melon | SU2061
WR271 / A1M271 / LRV 33



Barbados | SU2081
WR376 / A1M302 / LRV 13



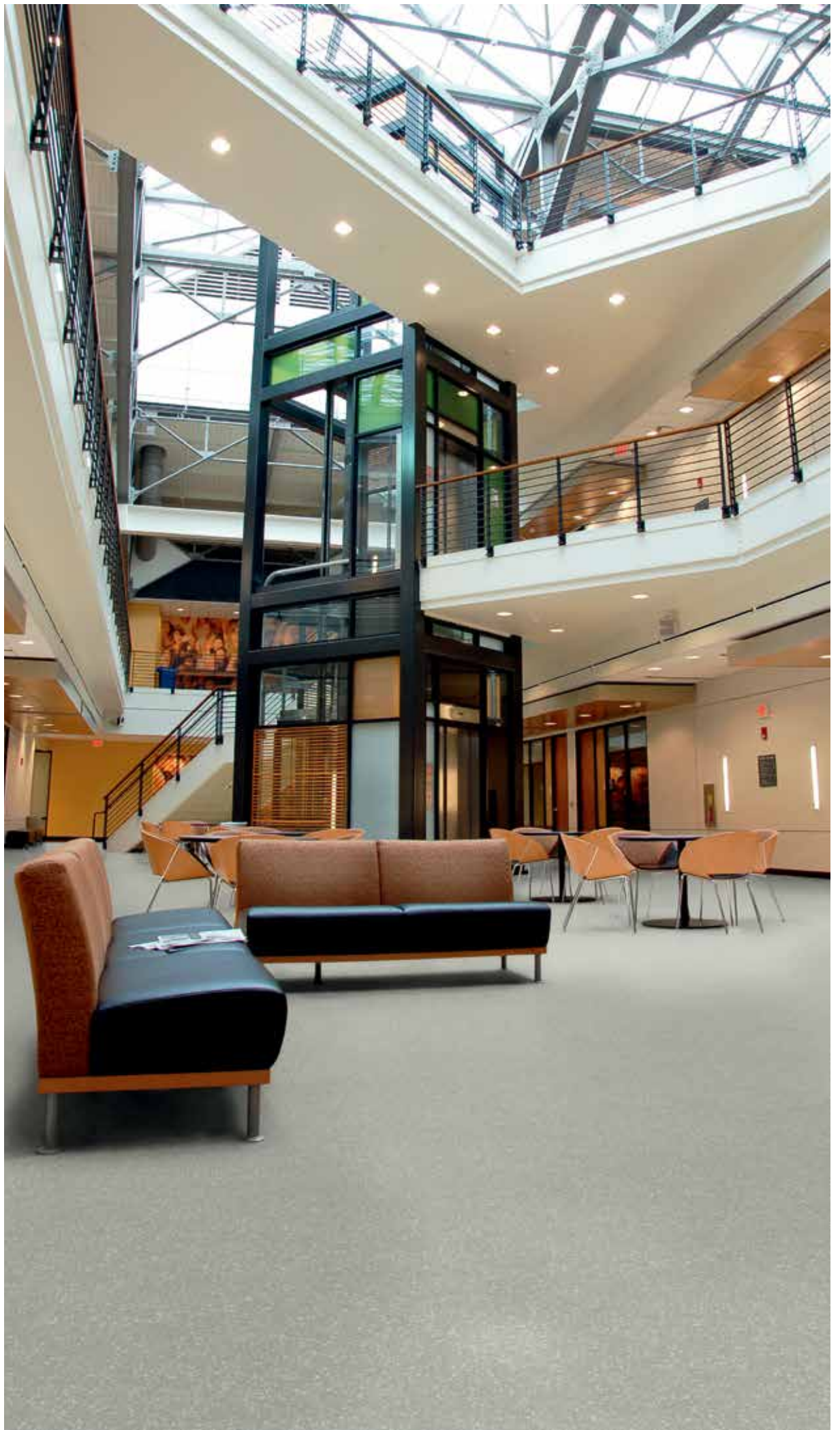
Citrus | SU2086
WR381 / A1M381 / LRV 45



Fennel | SU2049
WR262 / A1M154 / LRV 25



Basil | SU2082
WR377 / A1M308 / LRV 16



Typical applications / Zonas de instalación recomendadas / Typische Anwendungsbereiche

Indoor public spaces which are mainly subjected to foot (not wheeled) traffic, including lobbies, entrance areas, corridors. Classrooms (for labs and CDT areas, see Altro Walkway 20 SD, Altro Reliance 25 and Altro Classic 25). Hospital wards and corridors.

Espacios públicos interiores que tienen que soportar principalmente tráfico de personas (no rodado), incluidos vestíbulos, zonas de acceso y pasillos. Aulas (para laboratorios y zonas de tecnología, vea Altro Walkway 20 SD Altro Reliance 25 y Altro Classic 25). Salas y pasillos de hospitales.

Öffentliche Bereiche in Gebäuden, die vor allem zu Fuß (nicht mit Rädern) genutzt werden, wie zum Beispiel Vorhallen, Eingangsbereiche, Flure sowie Klassenzimmer. Für Labore und Werks-/Gestaltungs-/Technikbereiche siehe Altro Walkway 20 SD und Altro Classic 25. Ebenso für Stationen und Flure in Krankenhäusern.

Technical information / Información técnica / Technische Informationen

Safety requirements	Requisitos de seguridad	Sicherheitsanforderungen	Standard Norme Nachweis	Value Valor Wert
Fire behaviour tested in acc. with Classified in acc. with	Comportamiento ante el fuego testado de acuerdo con Clasificado de acuerdo con	Brandverhalten geprüft nach Einstufung nach	EN ISO 9239-1 EN ISO 11925-2 EN 13501-1	≥ 8kW/m ² Pass / Conforme / Bestanden B _{fl} -s1
Slip resistance	Resistencia al deslizamiento	Rutschhemmung/-sicherheit	EN 13893 PTV EN 13845 Annex C DIN 51130	DS ≥ 36 ESf R10
Sound insulation	Aislamiento acústico	Trittschallminderung	EN ISO 140-8	ca. 5 dB
Performance	Prestaciones	Leistungsverhalten		
Flooring type	Tipo de pavimento	Belagsart	EN 13845	Safety flooring Suelo de seguridad antideslizante Rutschfester Bodenbelag
Thickness	Espesor total	Gesamtdicke	EN ISO 24346	2 mm
Wear layer	Capa de uso	Nutzschichtdicke	EN ISO 24340	0.8 mm
Roll dimensions	Dimensiones del rollo	Rollenformat	EN ISO 24341	2 m x 20 m = 40 m ²
Weight	Peso	Flächengewicht	EN ISO 23997	2.5 kg/m ²
Indentation	Punzonamiento	Resteindruck	EN ISO 24343-1	≤ 0.10 mm
Classification for use	Areas de uso	Nutzungsklasse	EN ISO 10874	34, 43
Flexibility	Flexibilidad	Flexibilität	EN ISO 24344	Pass / Conforme / Bestanden
Light fastness	Resistencia a la luz	Farbbeständigkeit/Lichtechtheit	EN ISO 105-BO2	≥ 6
Castor chair abrasion	Huellas de sillas de ruedas	Stuhlrolleneignung	EN 425	Pass / Conforme / Bestanden
Wear resistance	Abrasión	Verschleißgruppe	EN 13845 Annex D	≤ 10% particles lost over 50000 cycles ≤ 10% de las partículas perdidas en 50.000 ciclos ≤ 10% Partikel werden über 50000 Umdrehungen verloren
Chemical resistance	Resistencia a los productos químicos	Chemikalien-/Fleckenbeständigkeit	EN ISO 26987	Good / Buena / Gut
Under floor heating	Suelo radiante	Eignung für Fußbodenheizung	EN 12524	Suitable / Apto / Geeignet
Electrical behaviours	Características eléctricas	Elektrostatisches Verhalten	EN 1815	≤ 2 kV Antistatic ≤ 2 kV Antiestáticas ≤ 2 kV Antistatisch
VOC emissions	Emisiones de COV	VOC Emissionen	Section 01350 / Floorscore	Pass / Conforme / Bestanden



07 | Altro Limited, Works Road, Letchworth Garden City, Hertfordshire, SG6 1NW, UK | EN 13845 | DoP No. 1016 | Reaction to fire Bfl-s1 | Slip Resistance: DS | EN 14041:2008 | 0120 Resilient floor covering to be used within a building



Indication of the level of emissions of volatile substances in the ambient air that are posing a toxic hazard on being inhaled, rated on a scale from A+ (very low emissions) to C (high emissions).



Altro Limited a company certified by SGS to ISO 9001 and ISO 14001.

Sustainability / Sostenibilidad / Nachhaltigkeit



*A+ BRE generic green guide rating for resilient flooring, full details available at www.thegreenguide.org.uk

Installation and maintenance / Instalación y mantenimiento / Verlegung und Pflege

Please refer to Altro installation and maintenance instructions. Failure to follow these instructions can affect product performance. Technical information on installation and staining can be found at www.altro.com

Consulte las instrucciones de instalación y mantenimiento de Altro. El no respetar estas instrucciones podría afectar al rendimiento del producto. Para más información sobre mantenimiento o instalación de nuestros productos visita: www.altroscandess.com

Bitte beachten Sie die Altro Verlege- und Pflegeanleitungen. Erfolgt Verlegung und Pflege des Bodenbelags nicht gemäß Anleitung, kann sich dies auf die Eigenschaften auswirken. Technische Informationen zur Chemikalienbeständigkeit sowie zur Verlegung und Pflege finden Sie unter www.altro.com

Altro. Designed for possibilities. Made for people. Altro Suprema, Altro Walkway 20, Altro Reliance 25, Altro Classic 25 and Altro Easyclean Technology are trademarks of Altro Limited.

United Kingdom

+44 (0) 1462 707 700

enquiries@altro.com

Spain

+34 91 549 5230

suelos@altroscandess.com

Australia

+61 3 9764 5666

info@asf.com.au