



Designed for possibilities.
Made for people.

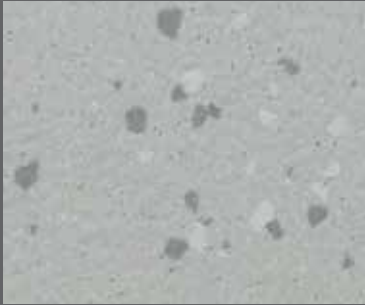
Altro Reliance 25





altro

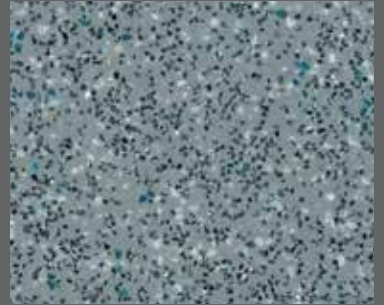
Altro Reliance 25



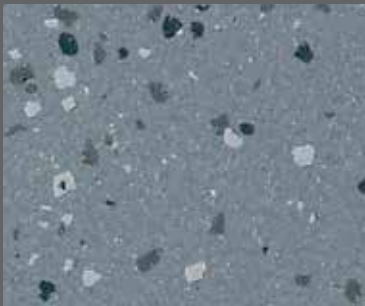
Streetlight | D2505
WR287 / A1M79 / LRV 45



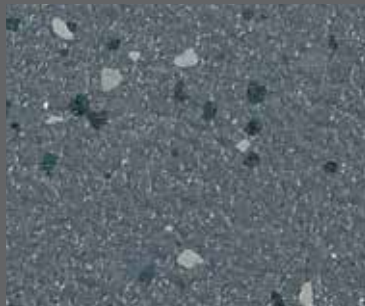
Temple | D2509
WR261 / A1M81 / LRV 27



Fog | D25153
WR81 / A1M81 / LRV 27



Rock | D2504
WR84 / A1M84 / LRV 23



Pavement | D2507
WR83 / A1M83 / LRV 14



Runway | D2506
WR72 / A1M72 / LRV 9



Midnight | D25421
WR72 / A1M72 / LRV 11



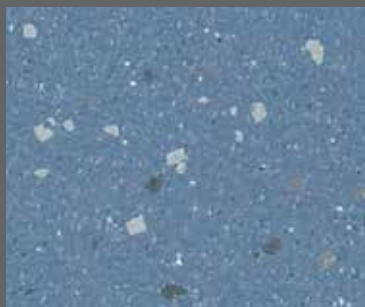
Storm | D25903
WR82 / A1M82 / LRV 16



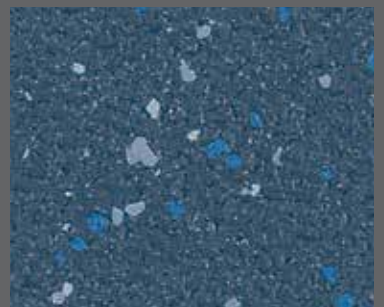
Twilight | D25910
WR39 / A1M34 / LRV 8



Stream | D2518
WR288 / A1M71 / LRV 22



Fountain | D2502
WR306 / A1M71 / LRV 22



Pool | D2503
WR307 / A1M73 / LRV 10

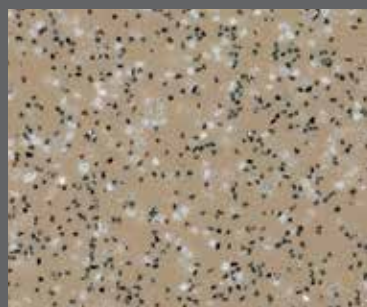
Codes: WR = weld rod, A1M = mastic, LRV = light reflectance value
Light reflectance values measured in accordance with BS 8493:2008.
Exact material match with samples cannot be guaranteed.



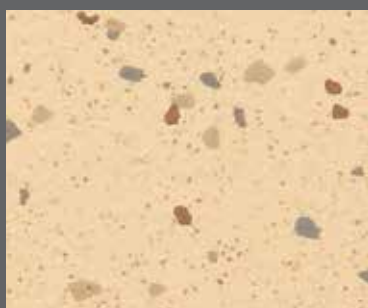
Ice Rink | D2514
WR291 / A1M01 / LRV 70



Arena | D2510
WR297 / A1M20 / LRV 41



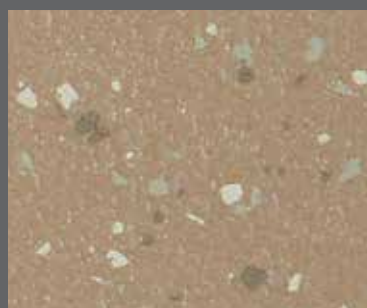
Biscuit | D25904
WR146 / A1M20 / LRV 30



Statue | D2513
WR304 / A1M12 / LRV 62



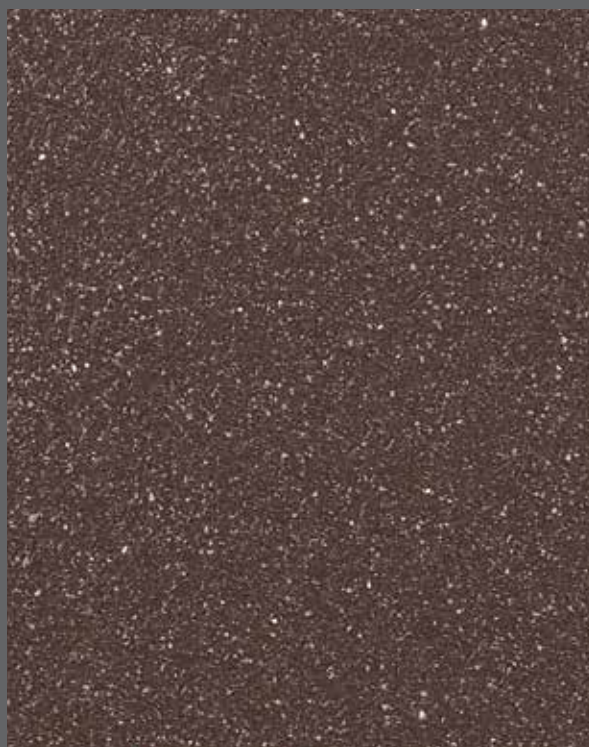
Bone | D25215
WR20 / A1M20 / LRV 37



Plaza | D2512
WR27 / A1M27 / LRV 32

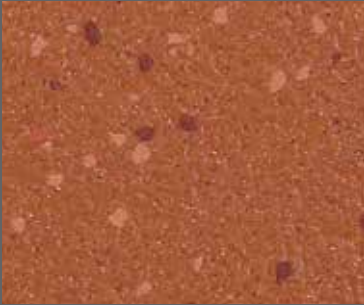


Monument | D2508
WR305 / A1M239 / LRV 23

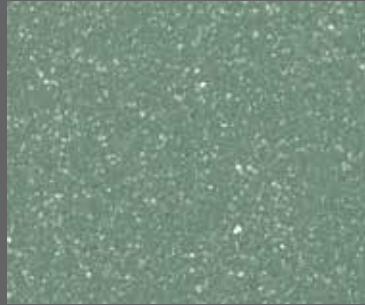


Gallery | D2511
WR62 / A1M62 / LRV 10

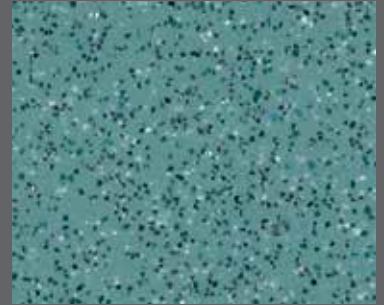
Códigos: WR = Cordón de soldadura, A1M = Mástique, LRV = Valor de reflectancia de la Luz
Los Valores de Reflectancia de la luz se miden de acuerdo con BS 8493:2008.
Las muestras no pueden garantizar un color exacto.



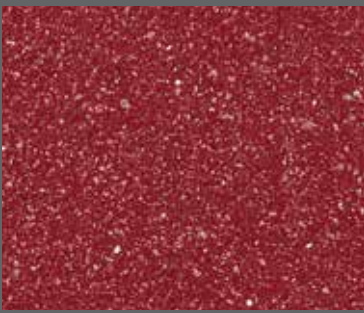
Signal | D2516
WR300 / A1M42 / LRV 13



Roof Garden | D2500
WR262 / A1M154 / LRV 23



Skyline | D25332
WR52 / A1M52 / LRV 25



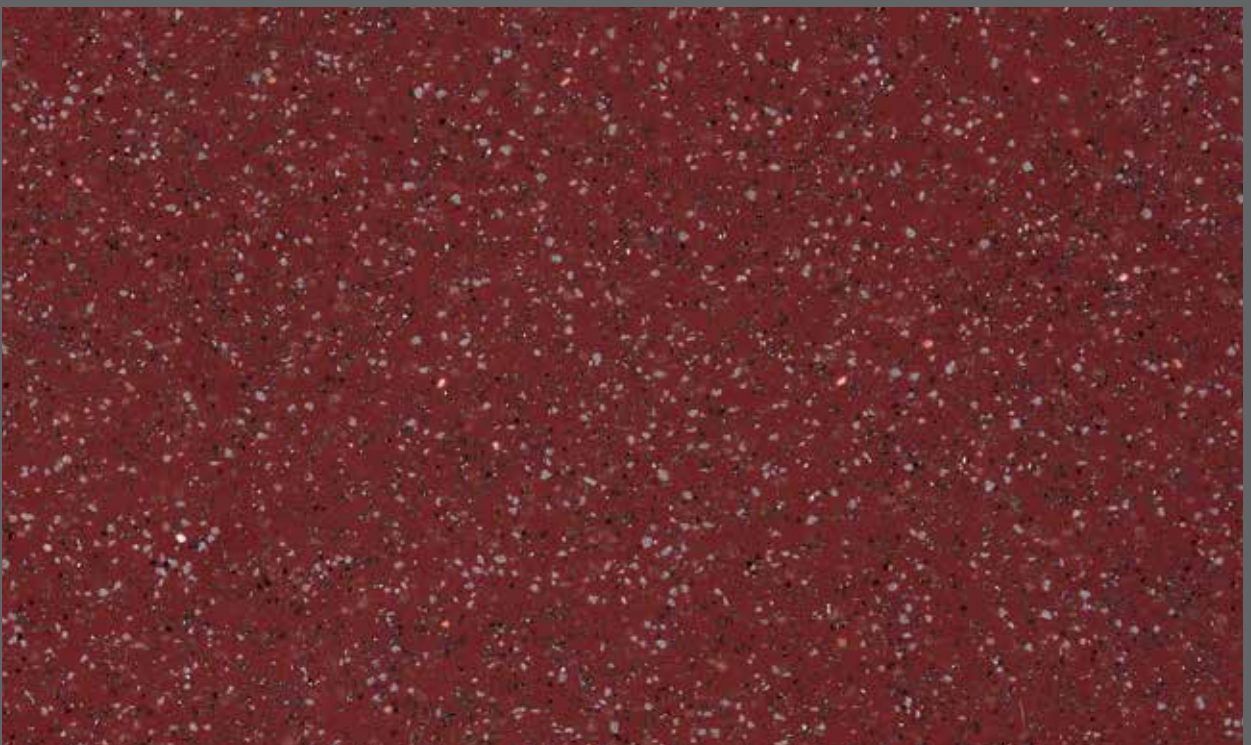
Forge | D2515
WR248 / A1M238 / LRV 9



Jet | D2501
WR100 / A1M100 / LRV 6



Vault | D2517
WR277 / A1M100 / LRV 5



Rust | D25907
WR150 / A1M238 / LRV 10

Abkürzungen: WR = Schweißschnüre, A1M = Altro mastic Dichtmasse, LRV = Lichtreflexionswert
Lichtreflexionswerte gemäß BS 8493: 2008.

Eine exakte Übereinstimmung des Materials mit Mustern kann nicht garantiert werden.



Typical applications / Zonas de instalación recomendadas / Typische Anwendungsbereiche

Corridors subject to foot and wheeled traffic including hospital streets. Laboratories (secondary, tertiary school labs / industrial). Clinical areas in hospitals. Atria / receptions in large public buildings.

Pasillos donde haya mucho tránsito de personas rodado como por ejemplo en hospitales. Laboratorios de institutos y escuelas superiores / industriales. Áreas clínicas en hospitales. Patios interiores / recepciones de edificios públicos de gran tamaño.

Flure mit hoher Besucherfrequenz sowie hoher Belastung durch Räder und Rollsysteme – auch für Krankenhaustreure. Laboratorien (in Schulen und Hochschulen / Industrielabore). Klinikbereiche in Krankenhäusern. Atrien / Empfangsbereiche in großen öffentlichen Einrichtungen.

Technical information / Información técnica / Technische Informationen

Safety requirements	Requisitos de seguridad	Sicherheitsanforderungen	Standard Norme Nachweis	Value Valor Wert
Fire behaviour tested in acc. with Classified in acc. with	Comportamiento ante el fuego testado de acuerdo con Clasificado de acuerdo con	Brandverhalten geprüft nach Einstufung nach	EN ISO 9239-1 EN ISO 11925-2 EN 13501-1	≥ 8kW/m ² Pass / Conforme / Bestanden Bfl-s1
Slip resistance	Resistencia al deslizamiento	Rutschhemmung/-sicherheit	EN 13893 PTV EN 13845 Annex C DIN 51130	DS ≥ 40 ESf R10
Sound insulation	Aislamiento acústico	Trittschallminderung	EN ISO 140-8	ca. 7 dB
Performance	Prestaciones	Leistungsverhalten		
Flooring type	Tipo de pavimento	Belagsart	EN 13845	Safety flooring Suelo de seguridad antideslizante Rutschfester Bodenbelag
Thickness	Espesor total	Gesamtdicke	EN ISO 24346	2.5 mm
Wear layer	Capa de uso	Nutzschichtdicke	EN ISO 24340	2.5 mm
Roll dimensions	Dimensiones del rollo	Rollenformat	EN ISO 24341	2 m x 20 m = 40 m ²
Weight	Peso	Flächengewicht	EN ISO 23997	3.3 kg/m ²
Indentation	Punzonamiento	Resteindruck	EN ISO 24343-1	≤ 0.10 mm
Classification for use	Areas de uso	Nutzungsklasse	EN ISO 10874	34, 43
Flexibility	Flexibilidad	Flexibilität	EN ISO 24344	Pass / Conforme / Bestanden
Light fastness	Resistencia a la luz	Farbbeständigkeit/Lichtechtheit	EN ISO 105-BO2	≥ 6
Castor chair abrasion	Huellas de sillas de ruedas	Stuhrolleneignung	EN 425	Pass / Conforme / Bestanden
Wear resistance	Abrasión	Verschleißgruppe	EN 13845 Annex D	≤ 10% particles lost over 50000 cycles ≤ 10% de las partículas perdidas en 50.000 ciclos ≤ 10% Partikel werden über 50000 Umdrehungen verloren
Chemical resistance	Resistencia a los productos químicos	Chemikalien-/Fleckenbeständigkeit	EN ISO 26987	Good / Buena / Gut
Under floor heating	Suelo radiante	Eignung für Fußbodenheizung	EN 12524	Suitable / Apto / Geeignet
Electrical behaviours	Caraterísticas eléctricas	Elektrostatishes Verhalten	EN 1815	≤ 2 kV Antistatic ≤ 2 kV Antiestáticas ≤ 2 kV Antistatisch
VOC emissions	Emisiones de COV	VOC Emissionen	Section 01350 / Floorscore	Pass / Conforme / Bestanden



16 | Altro Limited, Works Road, Letchworth Garden City, Hertfordshire, SG6 1NW, UK | EN 13845 | DoP-No. 1023 | Reaction to fire Bfl-s1 | Slip Resistance: DS | EN 14041:2008 | 0120 Resilient floor covering to be used within a building



Indication of the level of emissions of volatile substances in the ambient air that are posing a toxic hazard on being inhaled, rated on a scale from A+ (very low emissions) to C (high emissions).



Altro Limited a company certified by SGS to ISO 9001 and ISO 14001.

Sustainability / Sostenibilidad / Nachhaltigkeit



*A+ BRE generic green guide rating for resilient flooring, full details available at www.thegreenguide.org.uk

Installation and maintenance / Instalación y mantenimiento / Verlegung und Pflege

Please refer to Altro installation and maintenance instructions. Failure to follow these instructions can affect product performance. Technical information on installation and staining can be found at www.altro.com

Consulte las instrucciones de instalación y mantenimiento de Altro. El no respetar estas instrucciones podría afectar al prestaciones del producto. Para más información sobre mantenimiento o instalación de nuestros productos visita: www.altroscandess.com

Bitte beachten Sie die Altro Verlege- und Pflegeanleitungen. Erfolgt Verlegung und Pflege des Bodenbelags nicht gemäß Anleitung, kann sich dies auf die Eigenschaften auswirken. Technische Informationen zur Chemikalienbeständigkeit sowie zur Verlegung und Pflege finden Sie unter www.altro.com

Altro, Designed for possibilities. Made for people. Altro Reliance 25 and Altro Easyclean Technology are trademarks of Altro Limited.

United Kingdom

+44 (0) 1462 707 700

enquiries@altro.com

Spain

+34 91 549 5230

suelos@altroscandess.com

Australia

+61 3 9764 5666

info@asf.com.au